



Hepworth Court, 30 Gatliff Road
London SW1W

GARTON JONES.COM



Hepworth Court, 30 Gatliff Road
London, SW1W

GARTON JONES.COM

8 Gatliff Road
Grosvenor
Waterside
Chelsea
London
SW1W 8DP

Sales +44 (0) 20 7730 5007
gws@gartonjones.com
www.gartonjones.com

£715,000 Leasehold

A ONE DOUBLE bedroom apartment for sale of approx. 560sq.ft (52sq.m) in Hepworth Court, Grosvenor Waterside development, located close to the banks of the River Thames by Chelsea Bridge. The apartment has an open plan reception room/kitchen with a large private balcony with far reaching views. There is a modern bathroom and good storage including wardrobes to the bedroom and a utility cupboard housing a washing machine. Residents have the use of 24-HOUR CONCIERGE, GYM & SPA. On-site Sainsbury's Local, crèche, coffee shop and Purple Dragon private kids club. SLOANE SQUARE & VICTORIA station with Gatwick Express are within walking distance.

- 560sq.ft (52 sq.m)
- 1 Double Bedroom
- Luxury Bathroom Suite
- Open Plan Reception Room
- Integrated Kitchen
- 24 Hour Concierge
- Residents Leisure Suite with Gym & Spa Facilities
- On-Site Sainsbury's, Crèche, Coffee Shop & Private Kids Club
- Walking Distance to the Amenities & Transport Links of Sloane Square & Victoria



Available via Garton Jones on-site office at Grosvenor Waterside (underneath Bramah House).

Service Charges: £2614.23 - 01/01/25-30/06/25

Ground Rent: £1012.69 - 2025

Lease: 999 years from January 2003 (expires 3002)

EWS1 Compliant

EPC Rating: C (74)

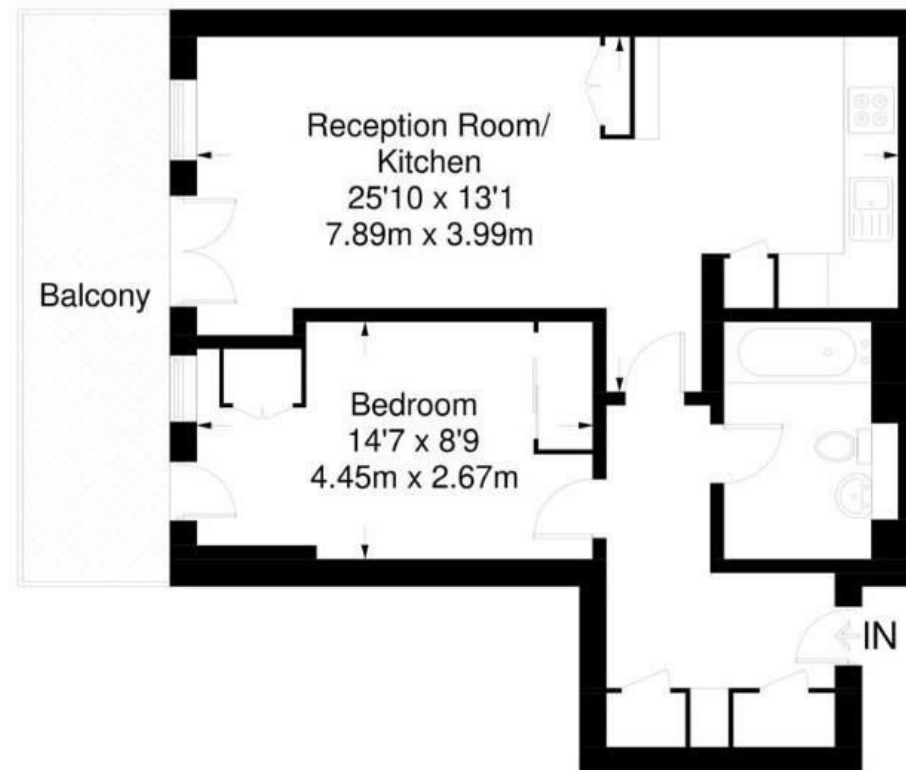
Council Tax: Westminster City Council (band E).



EPC certificate available on request.

Hepworth Court

Approximate Gross Internal Area = 560 sq ft / 52 sq m



Not to scale, for guidance only and must not be relied upon as a statement of fact.
All measurements and areas are approximate only and have been prepared in
accordance with the current edition of the RICS Code of Measuring Practice.

